



# Stylecto AX

User Guide



Made for

 iPhone | iPad | iPod

# Content

<b>Welcome</b>	<b>4</b>
Intended use	5
<b>Your hearing instruments</b>	<b>6</b>
Instrument type	6
Getting to know your hearing instruments	7
Components and names	7
Hearing programs	8
Features	8
<b>Daily use</b>	<b>9</b>
Charging	9
Turning on and off hearing instruments	9
Switching to standby mode	10
Inserting and removing the hearing instruments	11
Adjusting the volume	14
Changing the hearing program	14
<b>Special listening situations</b>	<b>15</b>
On the phone	15
Audio streaming with iPhone	15
Audio streaming with Android phone	16
Bluetooth	16

<b>Maintenance and care</b>	<b>17</b>
Hearing instruments	17
Ear pieces	19
Professional maintenance	21
<b>Important safety information</b>	<b>22</b>
Safety information on lithium-ion rechargeable batteries	22
<b>Further information</b>	<b>25</b>
Accessories	25
Operating, transport, and storage conditions	25
Disposal information	27
Explanation of symbols	27
Troubleshooting for hearing instruments	28
Country-specific information	29
Service and warranty	31

# Welcome

Thank you for choosing our hearing instruments to accompany you through everyday life. Like anything new, it may take you a little time to become familiar with them.

This guide, along with support from your Hearing Care Professional, will help you understand the advantages and greater quality of life your hearing instruments offer.

To receive the most benefit from your hearing instruments, it is recommended that you wear them every day, all day. This will help you get adjusted to them.



## CAUTION

It is important to read this user guide and the safety manual thoroughly and completely. Follow the safety information to avoid damage or injury.



Before using your hearing instruments for the first time, fully charge them.



The device may not look exactly like the guiding illustrations in these instructions. We reserve the right to make any changes we consider necessary.

## **Intended use**

Hearing instruments are intended to improve the hearing of hearing impaired persons. Diagnosis and prescription of a hearing instrument must be performed by hearing health specialists, e.g. acousticians, audiologists or ENT doctors.

Use the hearing instruments and accessories only as described in the respective user guides.

# Your hearing instruments



This user guide describes optional features that your hearing instruments may or may not have. Ask your Hearing Care Professional to indicate the features that are valid for your hearing instruments.

## Instrument type

Your hearing instruments are a RIC (Receiver-in-Canal) model. The receiver is placed within the ear canal and connected to the instrument via a receiver cable. The instruments are not intended for children under the age of 3 years or persons with a developmental age of under 3 years.

A power cell (lithium-ion rechargeable battery) is permanently built into your hearing instrument. This enables easy charging with Styletto AX Charger or D&C Charger slimRIC.

The wireless functionality enables advanced audiological features and synchronization between your two hearing instruments.

Your hearing instruments feature Bluetooth® Low Energy\* technology allowing for easy data exchange with your smartphone, and for seamless audio streaming with your

\* The Bluetooth word mark and logos are owned by the Bluetooth SIG, Inc., and any use of such marks by WS Audiology Denmark A/S of this product is under licenses. Other trademarks and trade names are those of their respective owners.

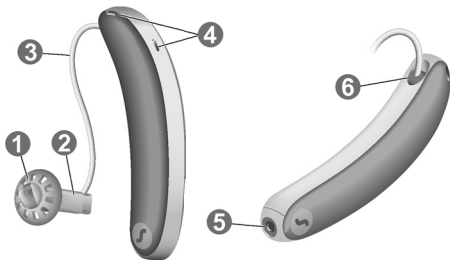
iPhone\* and for some Android smartphones that support Audio Streaming for Hearing Aids (ASHA).

## Getting to know your hearing instruments

Your hearing instruments have no controls.

If you want to adjust the volume or switch hearing programs manually, you can ask your Hearing Care Professional about a remote control option.

### Components and names



---

① Ear piece

④ Microphone openings

② Receiver

⑤ Charging contact




③ Receiver cable

⑥ Side indicator (red = right,  
blue = left)

---

\* iPad, iPhone, and iPod touch are trademarks of Apple Inc., registered in the U.S. and other countries.

You can use the following standard ear pieces:

Standard ear pieces	Size
<input type="radio"/>  Sleeve 3.0, Vented, Closed, Power	
<input type="radio"/>  Eartip 3.0 Open	
<input type="radio"/>  Eartip 3.0 Tulip	

You can easily exchange the standard ear pieces. Read more in section "Maintenance and care".

## Hearing programs

---

1

---

2

---

3

---

4

---

5

---

6

---

Read more in section "Changing the hearing program".

## Features

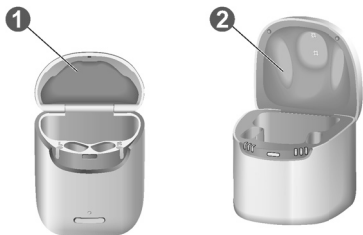
- The **tinnitus therapy feature** generates a sound to distract you from your tinnitus.



# Daily use

## Charging

You have the choice between Styletto AX Charger ① and D&C Charger slimRIC ②.



- ▶ Place the hearing instruments in the charger.
- ▶ Follow the instructions in the charger's user guide. You can also find useful tips for charging in the charger's user guide.

## Turning on and off hearing instruments

You have the following options to turn your hearing instruments on or off.

- ▶ Turning on: Take the instruments out of the charger. The startup melody is played in your hearing instruments. The **default** volume and hearing program are set.

- ▶ Turning off: Place the hearing instruments in the charger.

Note that the charger must be on.

## Switching to standby mode

Via remote control, you can switch your hearing instruments to standby mode. This mutes the hearing instruments. When you leave standby mode, the **previously** used volume and hearing program are set.

Note:

- In standby mode, the hearing instruments are **not** turned off completely. They draw some power.  
Therefore we recommend to use standby mode only for a short period of time.
- If you want to leave standby mode, but the remote control is not at hand: Turn your hearing instruments off and on again (by shortly placing them in the charger until one or more LEDs light up). Wait until the startup melody is played in your hearing instruments. This may take several seconds. Note that the **default** volume and hearing program are set.

## Inserting and removing the hearing instruments

Your hearing instruments have been fine-tuned for your right and left ear. Colored markers indicate the side:

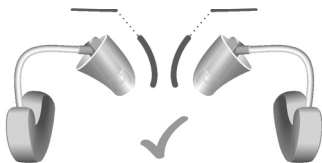
- red marker = right ear
- blue marker = left ear



Inserting a hearing instrument:

- ▶ For Sleeves, take care that the bend of the Sleeve is in line with the bend of the receiver cable.

Correct:



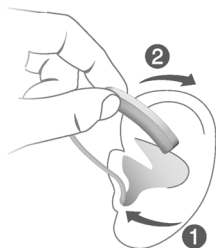
Incorrect:



- ▶ Hold the receiver cable at the bend closer to the ear piece.
- ▶ Carefully push the ear piece in the ear canal ①.
- ▶ Twist it slightly until it sits well.

Open and close your mouth to avoid accumulation of air in the ear canal.

- ▶ Lift the hearing instrument and slide it over the top of your ear ②.



## i

- It may be helpful to insert the **right** hearing instrument with the **right** hand and the **left** hearing instrument with the **left** hand.
- If you have problems inserting the ear piece, use the other hand to gently pull your earlobe downwards. This opens the ear canal and eases insertion of the ear piece.

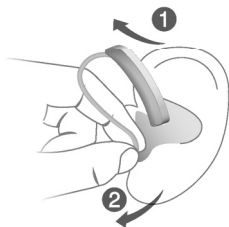
The optional retention strand helps to securely retain the ear piece in your ear. To position the retention strand:

- ▶ Bend the retention strand and position it carefully into the bottom of the bowl of your ear (refer to the picture).



Removing a hearing instrument:

- ▶ Lift the hearing instrument and slide it over the top of your ear ①.



- ▶ Grip the receiver in the ear canal with two fingers and pull it carefully out ②.

Do not pull the receiver cable.

Clean and dry your hearing instruments after usage.  
Read more in section "Maintenance and care".

## **Adjusting the volume**

Your hearing instruments automatically adjust the volume to the listening situation.

- ▶ If you prefer manual volume adjustment, use a remote control option.

An optional signal can indicate the volume change.

## **Changing the hearing program**

Depending on the listening situation, your hearing instruments automatically adjust their sound.

Your hearing instruments may also have several hearing programs which allow you to change the sound, if needed. An optional signal tone can indicate the program change.

- ▶ To change the hearing program manually, use a remote control option.

Refer to section "Hearing programs" for a list of your hearing programs.

The default volume is applied.

# Special listening situations

## On the phone

When you are on the phone, hold the telephone receiver slightly above your ear. The hearing instrument and telephone receiver have to be aligned. Turn the receiver slightly so that the ear is not completely covered.



## Telephone program

You may prefer a certain volume when using the phone. Ask your Hearing Care Professional to configure a telephone program.

- ▶ Switch to the telephone program whenever you are on the phone.

If a telephone program is configured for your hearing instruments, it is listed in section "Hearing programs".

## Audio streaming with iPhone

Your hearing instruments are Made for iPhone hearing instruments. This means you can get phone calls and listen to music from your iPhone directly into your hearing instruments.

For more information about compatible iOS devices, pairing, audio streaming and other useful functions, contact your Hearing Care Professional.

## **Audio streaming with Android phone**

If your mobile phone supports Audio Streaming for Hearing Aids (ASHA), you can get phone calls and listen to music from your mobile phone directly into your hearing instruments.

For more information about compatible Android devices, pairing, audio streaming and other useful functions, contact your Hearing Care Professional.

## **Bluetooth**

Your device is equipped with Bluetooth® wireless technology to enable audio streaming from mobile phones or other compatible devices.

In an airplane, the use of Bluetooth functionality may be restricted, especially during take-off and landing. If this is the case, you can switch off Bluetooth wireless technology in your device via the smartphone app.



# Maintenance and care

To prevent damage it is important that you take care of your hearing instruments and follow a few basic rules, which will soon become a part of your daily routine.

## Hearing instruments

### Cleaning

Your hearing instruments have a protective coating. However, if not cleaned regularly, you may damage the hearing instruments or cause personal injury.

- ▶ Clean your hearing instruments daily with a soft, dry tissue.
- ▶ Never use running water or immerse the devices in water.
- ▶ Never apply pressure while cleaning.
- ▶ Do not use alcoholic solvent on the charging contacts.
- ▶ To avoid corrosion, use a soft and dry tissue to wipe off sweat or liquid from the charging contacts or hearing instruments before inserting them in the charger.
- ▶ Ask your Hearing Care Professional for recommended cleaning products, special care sets, or more information on how to keep your hearing instruments in good condition.



## Drying

Use conventional products to dry your hearing instruments or our D&C Charger slimRIC. Ask your Hearing Care Professional for recommended drying products and for individual instructions on when to dry your hearing instruments.

## Storage

- Short-term storage (up to several days): Turn off your hearing instruments by placing them in the charger.

The charger must be on. If the charger is not on and you place your hearing instruments in the charger, the hearing instruments are **not** turned off.

Note that when you turn off the hearing instruments via a remote control or smartphone app, the hearing instruments are **not** turned off completely. They are in standby mode and still draw some power.

- Long-term storage (weeks, months, ...): First, fully charge your hearing instruments. Leave them in the Styletto AX Charger with the lid closed. Once the hearing instruments are fully charged, the charger and the hearing instruments go into hibernate mode to save power.

We recommend using drying products while storing the hearing instruments.

At 6 month intervals you will have to charge the hearing instruments to avoid an unrecoverable deep-discharge of the power cell. Deep-discharged

power cells cannot be charged anymore and they have to be replaced. We recommend recharging more frequently than 6 month intervals.

Observe the storage conditions in section "Operating, transport and storage conditions".

## Ear pieces

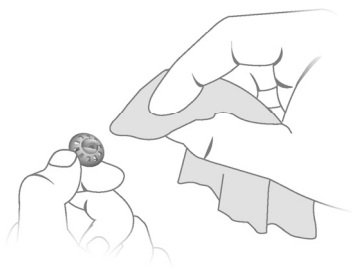
### Cleaning

Cerumen (ear wax) may accumulate on the ear pieces. This may affect sound quality. Clean the ear pieces daily.

For all types of ear pieces:

- ▶ Clean the ear piece right after removal with a soft and dry tissue.

This prevents that cerumen becomes dry and hard.

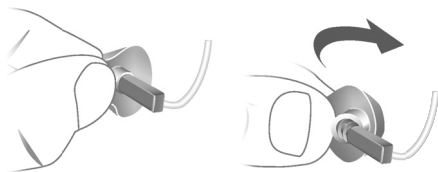


### Exchanging

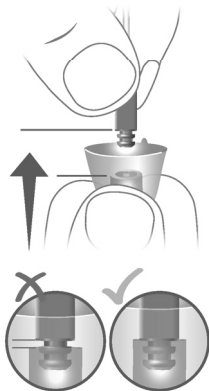
Exchange standard ear pieces approximately every three months. Replace them sooner if you notice cracks or other changes. The procedure for exchanging standard ear pieces depends on the type of ear piece. In section "Components and names", your Hearing Care

Professional has marked your type of ear piece.

- ▶ To remove the old Eartip or Sleeve, follow the illustration below. Be careful not to pull the receiver cable.



- ▶ Take particular care that the new Eartip or Sleeve covers the retention rings of the receiver fully.
- ▶ Check the firm fit of the new Eartip or Sleeve.



## **Professional maintenance**

Your Hearing Care Professional can perform a thorough professional cleaning and maintenance.

Ask your Hearing Care Professional for your individual recommendation of maintenance intervals and for support.

# Important safety information

## Safety information on lithium-ion rechargeable batteries



### **WARNING**

A lithium-ion rechargeable battery is permanently built into your device. Incorrect use of the device can cause the lithium-ion rechargeable battery to burst.

Risk of injury, fire or explosion!

- ▶ Follow the safety instructions for lithium-ion rechargeable battery in this section.



### **WARNING**

Risk of electric shock!

- ▶ Connect the charger only with a USB power supply which complies with IEC 60950-1 and/or IEC 62368-1.



## WARNING

- ▶ Observe the operating conditions.
- ▶ Pay special attention to protect your device from extreme heat (e.g. fire, microwave oven, induction oven or other high induction fields) and sunlight.
- ▶ Charge your hearing instruments only with an approved charger. Ask your Hearing Care Professional for support.
- ▶ Do not disassemble the device.
- ▶ Do not use the device in explosive atmospheres.
- ▶ Do not use devices that are deformed or obviously damaged.
- ▶ Do not use the device when its performance after charging reduces considerably. Return the device to your Hearing Care Professional.
- ▶ Do not dispose of the device in fire or water.



## WARNING

- ▶ Replacement and repair have to be performed by a professional. Therefore:
- ▶ Do not repair or replace the lithium-ion rechargeable battery yourself.
- ▶ In the unlikely event of a lithium-ion rechargeable battery bursting or exploding, keep all combustible materials away.

In any of the above cases, return your device to the Hearing Care Professional.

For more safety information, refer to the safety manual supplied with the device.



## Further information

### Accessories

The type of available accessories depends on the instrument type. Examples are: a remote control, an audio streaming device, or a smartphone app for remote control.

Consult your Hearing Care Professional for further information.

### Operating, transport, and storage conditions

The device operates in the following environmental conditions (also valid in between uses):

<b>Operating conditions</b>	<b>Discharging</b>	<b>Charging</b>
Temperature	0-50°C 32-122°F	10-35°C 50-95°F
Relative humidity	5-93%	20-75%
Atmospheric pressure	700-1060 hPa	700-1060 hPa

During extended periods of transport and storage, please observe the following conditions:

	<b>Storage</b>	<b>Transport</b>
Temperature (recommended)	10-25°C 50-77°F	-20-60°C -4-140°F
Temperature (maximum range)	10-40°C 50-104°F	-20-60°C -4-140°F
Relative humidity (recommended)	20-80%	5-90%
Relative humidity (maximum range)	10-80%	5-90%
Atmospheric pressure	700-1060 hPa	700-1060 hPa

Note that you have to charge the device at least every 6 months. We recommend to charge the device every 3 months. For details refer to section "Maintenance and care".

For other parts, such as the charger, other conditions may apply.



#### **WARNING**

Risk of injury, fire or explosion during shipment.

- ▶ Ship lithium batteries and hearing instruments according to local regulations.

## Disposal information

- ▶ To avoid environmental pollution, do not throw power cells or hearing instruments into household trash.
- ▶ Recycle or dispose of power cells or hearing instruments according to local regulations.

## Explanation of symbols

### Symbols used in our user guides

---



Points out a situation that could lead to serious, moderate, or minor injuries.

---



Indicates possible property damage.

---



Advice and tips on how to handle your device better.

---



Frequently asked question.

---



CE compliance label, confirms compliance with certain European Directives, refer to section "Conformance information".

---



Indicates the legal manufacturer of the device.

---

Made for

 iPhone | iPad | iPod

"Made for iPhone", "Made for iPad", and "Made for iPod" mean that an electronic accessory has been designed to connect specifically to iPhone, iPad, or iPod, respectively, and has been certified by the developer to meet Apple performance standards. Apple

is not responsible for the operation of this device or its compliance with safety and regulatory standards. Please note that the use of this accessory with iPhone, iPad, or iPod may affect wireless performance.

## Troubleshooting for hearing instruments

### Problem and possible solutions

---

Sound is weak.

---

- Increase the volume.
  - Charge the hearing instrument.
  - Clean or exchange the ear piece.
- 

Hearing instrument emits whistling sounds.

---

- Reinsert the ear piece until it fits securely.
  - Decrease the volume.
  - Clean or exchange the ear piece.
- 

Sound is distorted.

---

- Decrease the volume.
  - Charge the hearing instrument.
  - Clean or exchange the ear piece.
- 

Hearing instrument emits signal tones.

---

- Charge the hearing instrument.
- 

Hearing instrument does not work.

---

- Turn the hearing instrument on.
  - Charge the hearing instrument. Observe also the status LEDs on the charger.
- 

Consult your Hearing Care Professional if you encounter further problems.

## **Country-specific information**

### **USA and Canada**

Certification information for hearing instruments with wireless functionality:

Styletto AX:

- HVIN: RFM004
- Contains FCC ID: 2AXDT-RFM004
- Contains IC ID: 26428-RFM004



## Service and warranty

Serial numbers	Instrument	Receiver unit
----------------	------------	---------------

---

Left:

---

Right:

---

### Service dates

---

1:	4:
----	----

---

2:	5:
----	----

---

3:	6:
----	----

---

### Warranty

---

Date of purchase:

---

Warranty period in months:

---

**Your Hearing Care Professional**

---

 **Legal Manufacturer**

WSAUD A/S  
Nymøllevej 6  
3540 Lyngø  
Denmark

Document No. 04758-99T01-7600 EN  
Order/Item No. 210 131 10  
Master Rev01, 07.2021  
© 07.2021, WSAUD A/S. All rights reserved

  
0123

**[www.signia.net](http://www.signia.net)**